

# The ZetaTalk Newsletter

## Issue 343, Sunday April 28, 2013

*Weekly news and views from around the world and beyond.*

New ZetaTalk

Earth Changes

Announcements

Signs of the Times

### PPP Survey

Public Policy Polling published the results of their conspiracy survey on April 2, 2013 and the results were not as hoped by the establishment. Deep distrust of the government and the former Bush administration was revealed.

<b>Q1</b>	Do you believe global warming is a hoax, or not?	
	Do .....	37%
	Do not .....	51%
	Not sure .....	12%

<b>Q3</b>	Do you believe a UFO crashed at Roswell, New Mexico, in 1947, and the US government covered it up, or not?	
	Do .....	21%
	Do not .....	47%
	Not sure .....	32%

<b>Q4</b>	Do you believe that a secretive power elite with a globalist agenda is conspiring to eventually rule the world through an authoritarian world government, or New World Order, or not?	
	Do .....	28%
	Do not .....	46%
	Not sure .....	25%

<b>Q10</b>	Do you believe aliens exist, or not?	
	Do .....	29%
	Do not .....	47%
	Not sure .....	24%

13% of Americans Believe President Obama Is the Antichrist

April 2, 2013

<http://ca.news.yahoo.com/13-americans-believe-president-obama-antichrist-163515257--politics.html>

*In a survey of 1,247 registered American voters from March 27-30 (conducted through automated telephone interviews), Public Policy Polling discovered some choice nuggets among the things we do and do not believe.*

**ZetaTalk Insight 4/6/2013:** *Despite absolute denial by the official US government, 21% stated that Roswell was a crashed ship and 29% stated that aliens exist. Despite the cover-up over Planet X, aka Nibiru being in place during the survey, with both the UN the US government standing behind the theory, 37% felt Global Warming was a hoax. Trust in the government, in particular the Bush administration, was devastatingly low, with 51% discarding the myth that Saddam was involved in 911, and 44% discarding the WMD in Iraq lie. Yet neither of these Bush administration claims was officially debunked. Clearly the public feels the government would deliberately lie to them, with 51% sure that more than Oswald was responsible for the death of JFK. What will the public do when learning that yet another secret was withheld from them? How eagerly will they follow federal or state*

*guidelines on how to survive after devastation or where to move when their homes are flooded? They will clearly be suspicious, and likely to balk or fail to follow directions. If 21% feel there is a New World Order agenda, how fearful will the public be about moving into government operated survival work camps?*

Conspiracy theories about martial law abound. In truth, most of these arose during the Bush administration when those at the helm of the Bush administration did indeed want to incite martial law. But suspicion lingers. For example, about FEMA work camps. The Katrina rescue showed that under Bush, FEMA was hardly poised to rescue the citizenry, and appeared to be more a puppet willing to allow extermination-by-disaster of the citizenry. Then there was the panic over plastic grave liners in 2008, outlined in [Issue 89](#) of this newsletter. Surely they were a type of body-bag for the mass extermination plans, was the hype. [FEMA](#) has a job to do, as they are expected to be the first line of defense during a natural disaster within the US. They have to be prepared for a New Madrid adjustment, hurricane ravaged coastlines, volcanic eruptions such as occurred with Mt. Saint Helens, or quakes along the San Andreas. Obama's [Executive Order 13575](#) showed that he is trying to surreptitiously lay the groundwork for relocating large numbers of citizens into rural areas, to fend for themselves. Given the suspicion of the government lingering after the Bush administration, Obama does not have an easy path ahead of him.



### New Nationwide FEMA Camps Should Raise Eyebrows

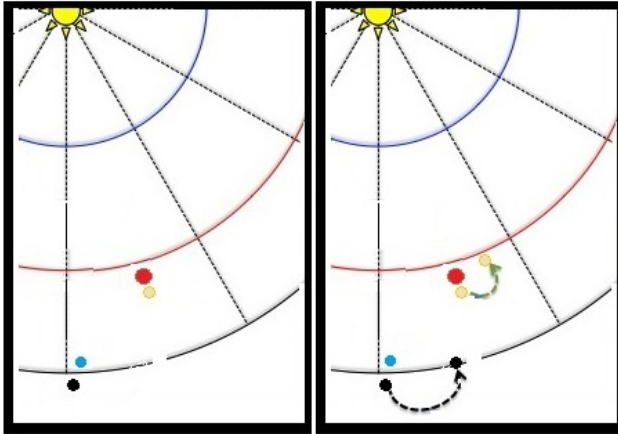
January 2, 2012

[http://www.americanthinker.com/2012/01/new\\_nationwide\\_fema\\_camps\\_should\\_raise\\_eyebrows.html](http://www.americanthinker.com/2012/01/new_nationwide_fema_camps_should_raise_eyebrows.html)

*Furthermore, "[w]henver practical, displaced citizens will be given the first opportunities for employment within the camp, assuming skills and capabilities are pertinent for the open positions." This led me to question the stated purpose of these camps, considering that the successful contractor would need to have personnel ready to go on such short notice, with notification from FEMA, Homeland Security, or the president within 72 hours. So the question arises: how could the camp utilize "displaced citizens" in the initial staffing unless the contractor knew where and when a disaster, man-made or otherwise would occur beforehand?*

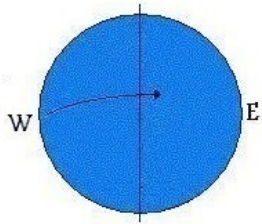
### Wobble Weather

The Zetas have explained that as Planet X presses closer on its straight line path through the solar system, it will appear to move to the right, squeezing the Earth to the left in the eddy flow cup formed in front of Planet X.

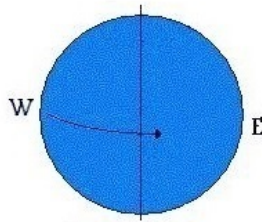


**ZetaTalk [Prediction](#) 12/15/2012:** *Planet X continues in its straight line path, creating a more violent wobble in the Earth and appearing more visible in the skies, also squeezing Venus toward the Earth to loom large, as Planet X will be coming outside the orbit of Venus at that time and press the Earth far to the left of the August location. Planet X has given the crowded planets around Earth a chance to escape. The Dark Twin, which has fallen behind the Earth, moves forward in their shared orbit. Venus is almost thrown forward in her orbit by the Repulsion Force, having been pushed too close to the Earth during the squeeze.*

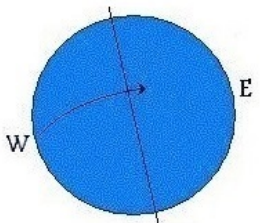
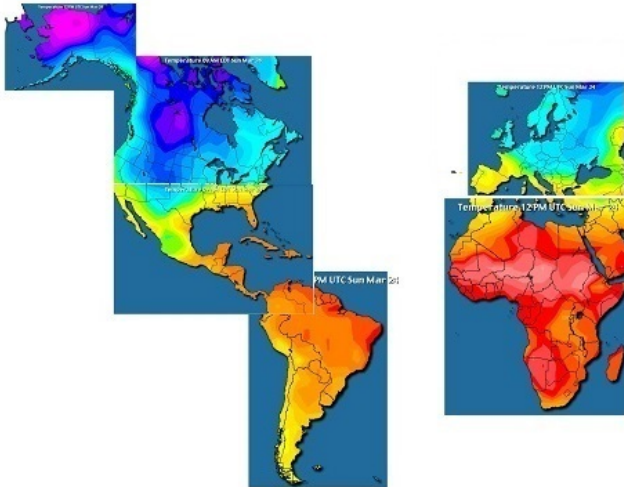
As this time approaches, what does this do to the daily Earth wobble, wherein the magnetic hosing from the N Pole of Planet X pushes the magnetic N Pole of Earth away? When Planet X is in line with the Sun, slightly to the right and at the 4 o'clock position (when viewed from the Northern Hemisphere), this magnetic push has happened when the Sun is over the Pacific, what I have been calling the New Zealand face. Now, in addition to becoming more violent, it seems to have shifted to where the magnetic push happens further East. This can clearly be seen by weather temperature maps, and explains why the US had experienced such a lingering Winter. Note that where on the same latitude, N America is colder than Europe, and S America colder than Africa, due to the push away of the N Pole and bounce back. Likewise the tilt now over the India Face visibly heats the land along the global tilt line, confirming this tilt.



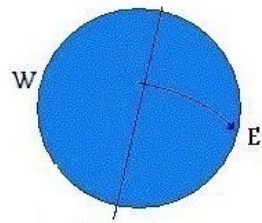
~~New Zealand Face~~  
N America Face



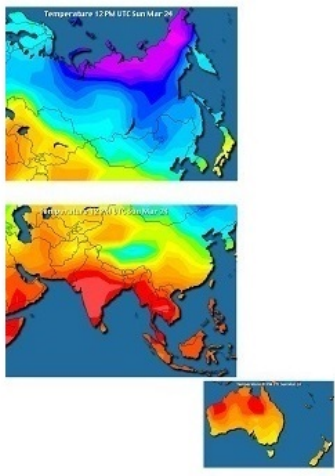
~~N America Face~~  
Italy Face



~~Italy Face~~  
India Face



~~India Face~~  
New Zealand Face

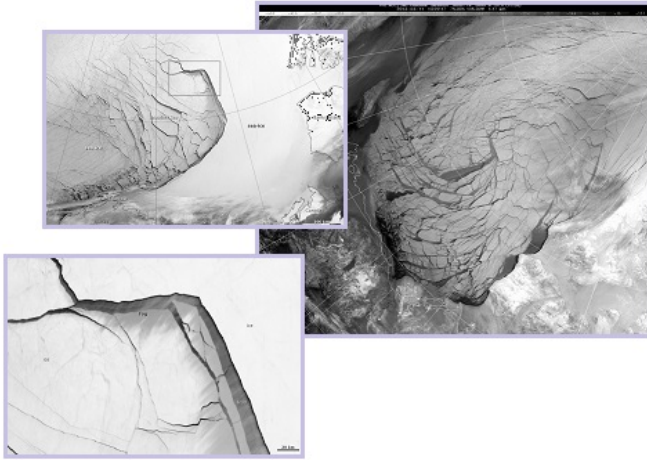


**ZetaTalk [Explanation](#) 4/6/2013:** *This shift of the Figure 8 to the East is due to the push against the Earth's magnetic N Pole occurring SOONER each day than prior. Thus instead of occurring when the Sun is high over the Pacific, over New Zealand, it is now occurring when the Sun is high over Alaska. All the wobble points have shifted eastward accordingly. This has brought a lingering Winter to the*



*western US, and a changed sloshing pattern to the Arctic waters. Instead of Pacific waters being pushed through the Bering Straits into the Arctic when the polar push occurs, the wobble is swinging the Arctic to the right, and then later to the left, creating a circular motion in the waters trapped in the Arctic. Since the Earth rotates counterclockwise, the motion also takes this path. This is yet another piece of evidence that the establishment is hard pressed to explain. They are attempting to ascribe this to high pressure and wind, all of which are not new to the Arctic, but this circular early breakup of ice in the Arctic is new.*

Indeed this new Figure 8 pattern, having moved East a bit, has shown up in a swirling ice melt pattern in the Arctic, the swirl following the swing of the N Pole as it forms the Figure 8.



### Canada's Arctic Ice Cracks in 'Spectacular' Event

April 2, 2013

<http://www.vancouver.sun.com/news/national/Canada>

*The ice in Canada's western Arctic ripped open in a massive "fracturing event" this spring that spread like a wave across 1,000 kilometres of the Beaufort Sea.*

*Huge leads of water – some more than 500 kilometres long and as much as 70 kilometres across – opened up from Alaska to Canada's Arctic islands as the massive ice sheet cracked as it was pushed around by strong winds and currents. It took just seven days for the fractures to progress across the entire area from west to east.*

### Extensive Ice Fractures in the Beaufort Sea

March 29, 2013

<http://earthobservatory.nasa.gov/IOTD/view.php?id=80752&src=iotrds>

*A high-pressure weather system was parked over the region, producing warmer temperatures and winds that flowed in a southwesterly direction. That fueled the Beaufort Gyre, a wind-driven ocean current that flows clockwise. The gyre was the key force pulling pieces of ice west past Point Barrow, the northern nub of Alaska that protrudes into the Beaufort Sea.*

## Sequester Debunking

Has the sequester hit the debunking crowd, those hired on a professional basis as black ops to debunk the ZetaTalk message – the truth about the alien presence and Planet X, aka Nibiru? There was a notable drop in the ferocity of debunking after the sequester hit. The cash outflow from all federal agencies was suddenly under review and reassessment. Per the Zetas, the sequester has indeed caused cutbacks in the paid debunking campaigns.

**ZetaTalk Comment 3/30/2013:** *The rats are leaving a sinking ship! For years, since 1983 when Reagan's Executive Order directing a cover-up over the approach of Planet X, aka Nibiru,*

*government funds have been used to suppress chatter about this issue. The alien presence is also a suppressed item, with Project Bluebook and other government projects debunking UFO sightings and harassment of contactees paid for by the taxpayers. It is not just Obama's decision to reverse Reagan's Executive Order and admit to the presence of Planet X, it is also the sequester that has hit the pockets of the debunkers.*

*Most of this activity has taken place as black ops, not on the books and officially not even happening. All the tentacles of this octopus are difficult to stop, even by official proclamation, as the CIA and DIA operate on a need to know basis and thus, just who is doing what is known only at the end of the tentacle. Those in sympathy with the cover-up continued their harassment of ZetaTalk proponents despite Obama's new Executive Order, but when the funds were cut off, things change. One proof that a debunker or debunker site was a paid debunker or site is how quickly they vanish when their paycheck is no longer forthcoming.*

More than just a reduction in the patter was noted when a very revealing blooper occurred on the [GodlikeProduction](#) message board. A paid debunker, with four false identities (two in Korea and two in Kazakhstan), accidentally pasted a clipboard item onto the forum. Before it could be deleted it was snatched up and examined, and what it revealed was damning.

Re: Medical Type Says Sandy Hook is Total Bullshit

0x1a970000, 0x1ab00000, 0x27570000  
rdpclip.exe, "iostatZd15.1"

you copied a large amount of data onto the clipboard ...Do you want to save this data on the clipboard?

User ID: 35850666 Korea

User ID: 36689081 Korea

User ID: 33951304 Kazak

User ID: 36809983 Kazak

**N.C.S. logo.jpg**

//SECRET

C:\SharePoint012US\NCSSAD\Wrkc9inet-N-7339.txt

\*\*\*\*\*  
REMINDEES — NOTES  
\*\*\*\*\*

Sensitivity Level

Action Code

Team 5.A/

SITE

Location of official Agency folder

None NPRC

Team Contact

Sheila N\*\*\*\*\*

CHECKLIST

*Do any of the respondents display the urge to supply information that could be helpful to your mission?*

*Do the respondents appear hostile to your attempts to steer the discussion?*

*Have you made a personal chart taking care to note who appear to be the "leaders" versus who appear to be the "followers"?*

*Have you attempted to gauge the "temperature" of the forum's users?*

*In other words, the prevailing social psychology of the forum's members?*

*Have you been more successful with one or the other XStart methods that were demonstrated in N-7015A.DOC?*

*Have more technical members (Computer Programmers, Administrators, or Moderators) of the forum deduced or accused you of hiding behind a proxy?*

*Would you gain more trust and/or credibility if you were to use one of the Agency's allotted "HOME" pools? (most often needed when handling EVTS that are more sensitive to the pop. of a specific locale but also location centered web sites such as FB or Patch)*

*Has your PREDEV "persona" been successful or do you gauge that the users find you to be too obtrusive? Accusations of being "ever present" are.*

**Forum Shill gets Busted: ATS and GLP Censor to Cover his Tracks**

**March 24, 2013**

<http://www.insanemedia.net/forum-shill-gets-busted-ats-and-glp-censor-n-7015a/2924>

*Forum Shill gets Busted: ATS and GLP Censor to Cover his Tracks. A Forum Shill gets busted. Something very interesting happened over at GLP March 24th at 9:28 pm. Something that did not go unnoticed by GLP posters and many others around the interwebz. On page 7 of a thread titled "Medical Type Says Sandy Hook is Total BS", a user from "Kazakhstan" posted the*

*following. Needless to say suspicions were aroused and investigations into specific terms in the text were Googled. Namely N-7015A.DOC, PREDEV persona, etc. An early search for N-7015A.DOC resulted in this list. Second from the bottom we see eda.ogden.disa.mil. If you do the same search, only the forum references appear. The eda site was very quickly removed from the Google string. How very very interesting.*

**ZetaTalk Comment 4/6/2013:** *At a time when funds to support these paid campaigns are drying up (due to the sequester) and due to a changed attitude in Washington DC on the need for such disinformation campaigns (due to Obama's intent to announce the truth about Nibiru aka Planet X) there has been consternation in the halls of the debunkers. Debunker managers are in competition with each other, trying to do the most with the least, and pressuring those reporting to them for more efficiency and demonstrated results. This environment makes for fatigue, disgruntlement, distraction and mistakes. The revelation on a GodlikeProduction thread was the accidental posting from a debunker's clipboard of information accidentally copied into the clipboard. It revealed that fronts in Kazakhstan and Korea were being used, multiple fronts/personas available to each individual debunker, and that the debunking participants included the US military. It revealed a checklist to be used by the debunkers, showing this to be anything but a casual operation by individuals, as the debunking campaigns have always claimed.*

*The speed with which this accidental posting was removed from GodlikeProduction and Above Top Secret forums also revealed that the debunkers have access to moderator privileges in these forums, showing that they themselves are debunking operations. Cover blown! It has been noted in the past that those debunking ZetaTalk and Nancy Lieder seemed to work as a team, using a one-two punch technique where one would ask a question and another would answer, or all would attack the same element of ZetaTalk simultaneously. There was no obvious link between these debunkers, but the pattern was unmistakable and in fact turned many in the public to take ZetaTalk seriously. As with NASA singling Nancy Lieder out in their denials about Nibiru and Planet X, why just this source, and not others? Will there be other such slips as the cover-up unravels, revealing what has been behind the curtain? How could it be otherwise when the rage over lost wages has just begun to take hold?*

## Biogas Power

Biogas, which is primarily methane gas, is easily obtained from compost or human or animal manure. Composting toilets produce methane, which must be vented. Farts, after all, are methane gas, and can be lit for a momentary flame, as many adolescent boys discover. But when captured in a capped dome, the gas produced during the breakdown of compost or waste is equivalent to natural gas. It can be used in a cooking stove, a furnace, or in a generator to produce electricity. It is explosive, like natural gas, and should be treated accordingly. The Beauval zoo in central France recently announced that they are installing a methane generator to help with their energy costs.

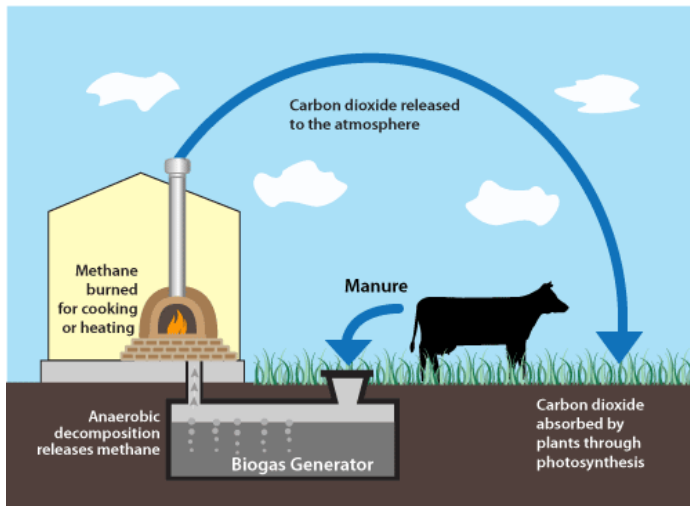
[Zoo to Build Power Plant that Uses Panda Poop to Produce Electricity](http://www.rawstory.com/rs/2013/04/05/zoo-to-build-power-plant-that-uses-panda-poop-to-produce-electricity/)

April 5, 2013

<http://www.rawstory.com/rs/2013/04/05/zoo-to-build-power-plant-that-uses-panda-poop-to-produce-electricity/>

*The zoo announced Friday it would build a facility that would process the dung of the two pandas and of other animals, as well as plant matter, to produce biogas that will then be turned into heat and electricity. They eat 35 kilos (78 pounds) of bamboo a day and defecate about 30 kilos a day, making them prime candidates for this green initiative.*

Using biogas to reduce energy costs on farms is a growing practice, as biogas is renewable energy, part of nature's cycle where liquid and solid fertilizer are produced as well as methane. If not used by man as an energy source, methane breaks down into water and oxygen and carbon dioxide, which incite plant growth. Man's use of methane for energy just hurries the process along. It's all natural and non-polluting.

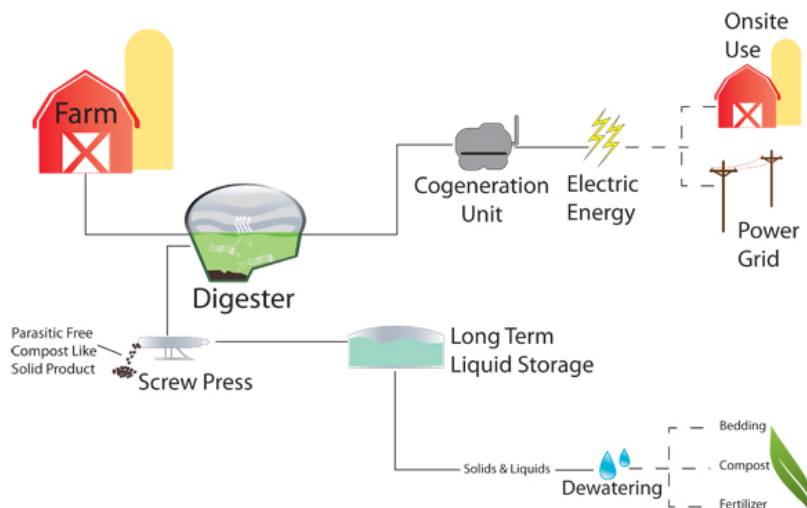


### Homemade Biogas

<http://agroindustriindonesia.blogspot.com/2010/09/home-made-biogas.html>

*Flammable biogas can be collected using a simple tank, as shown here. Animal manure is stored in a closed tank where the gas accumulates. It makes an excellent fuel for cook stoves and furnaces, and can be used in place of regular natural gas. People have been using biogas for over 200 years. In the days before electricity, biogas was drawn from the underground sewer pipes in London and burned in street lamps, which were known as “gaslights.” In many parts of the world, biogas is used to heat and light homes, to cook, and even to fuel buses. It is collected from large-scale sources such as landfills and pig barns, and through small domestic or community systems in many villages.*

## Bio Process



### Biogas Energy – Bio Fuels Provide Renewable Energy

<http://www.skyrenewableenergy.com/renewable-energy/bio/>

*Anaerobic digesters are animal waste tanks or storage ponds sealed with covers that trap the biogas produced in a digester, creating a sort of “biogas plant”. The biogas is then pulled from the digester by providing a slight vacuum on a pipe with a gas pump or blower. Biogas, which contains 60% – 80% methane, is used to produce energy. Methane can power an engine generator to produce electricity for your facility or to be put back on the grid. The methane gas*



*can also be used to operate a boiler or space heater, as well as chilling and refrigeration equipment. Gas that is not used for energy production is ignited and flared to reduce methane emissions and odor.*

The Troubled Times pages cover many aspects of [methane gas use](#) as well as gas from many [vegetarian sources](#). Wood gas, for instance, is a means of running cars or trucks or tractors off the gas from heated wood. Wood gas was used during WW II in Finland and Australia as a substitute for gasoline, which was rationed and hard to come by. [Drawings](#) that accompanied a Finland wood gas car are available on the Troubled Times pages. Pull them down and print them off while there is still time! A BBS radio interview, recorded in 2005 by Nancy when she hosted a show there, covers methane gas and wood gas production and use. Tim cooked his dinner every night by simply hooking up his composting barrel to his gas stove, and using a turn-on/off valve just as one would use for a natural gas stove.

**AUDIO:** [Methane Generator](#)

**AUDIO:** [Compressing Methane](#)

**AUDIO:** [Wood Gas](#)

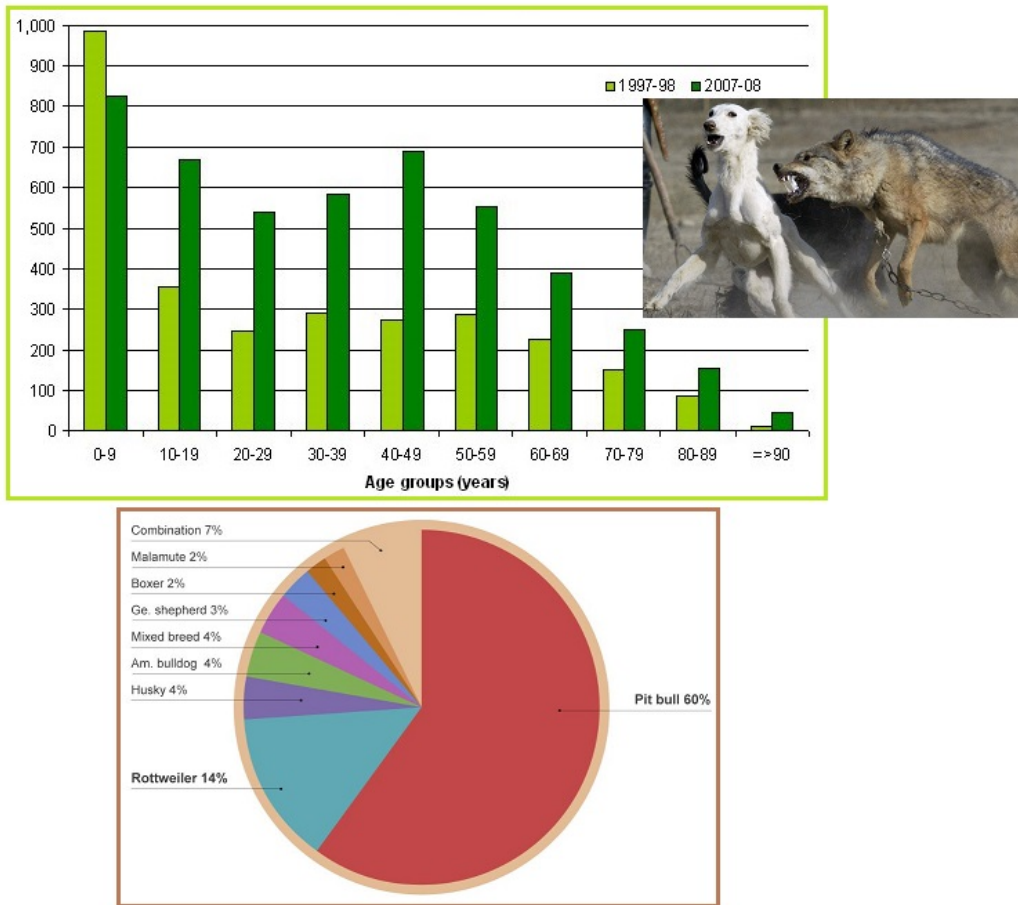
The Survival Home, Practical and Possible

<http://www.zetatalk.com/index/blog1109.htm>

*How to secure heat and methane gas from manure and human sewage. Cooking with methane, and how to rig your gas stove to do this. Compressing methane into tanks. Wood gasifiers and how to scrub the gas.*

## **Dog Attack Increase**

Are dog attacks on the increase? Statistically, this has been documented, along with the key culprits – Pit Bulls and Rottweilers.



### 2011 Dog Bite Fatalities

<http://www.dogsbite.org/dog-bite-statistics-fatalities-2011.php>

*31 U.S. fatal dog attacks occurred in 2011. Despite being regulated in Military Housing areas and over 600 U.S. cities, pit bulls led these attacks accounting for 71% (22). Pit bulls make up less than 5% of the total U.S. dog population. Together, pit bulls (22) and rottweilers (4), the number two lethal dog breed, accounted for 84% of all fatal attacks in 2011. In the 7-year period from 2005 to 2011, this same combination accounted for 74% (157) of the total recorded deaths (213).*

### The Real Truth - Animal Attacks – Why Increased Aggression!

November 1, 2010

<http://realtruth.org/articles/101101-002-environment.html>

*In August 2009, an elderly woman was killed by a pack of 11 or more wild dogs while walking in rural Georgia. When her husband went looking for her, he too was attacked and killed by the same pack. According to BBC News, as neighborhood violence increases, more people are opting to keep aggressive dogs for protection. In Britain, the amount of violent dog attacks on people has doubled in the past four years and attacks on other dogs have increased significantly.*

Per the Zetas, we should expect this not just from our pets but from domesticated and wild animals and even ourselves. Signals from the rock, which is under compression as plate movements increase, are basically telling these dogs to flight or take flight.

**ZetaTalk Insight 3/30/2013:** *Dog attacks are on the increase for several reasons, but the most significant reason is the tension and compression in the rock as plate movements increase. It is known that electromagnetic screech increases due to rock compression, a factor that makes pets and*

*domestic animals flee their homes. Nature is telling them to leave the area, triggering the fight or flight mechanism, and these signals are not easy for the animal to discern. Why does it feel uneasy? And if it feels uneasy, what pending attack or danger is the cause? Dog attacks have been sorted by breed, with Pit Bulls and Rottweilers the worst because these breeds have been bred to be lethal.*

*We have advised that at the hour of the Pole Shift that farmers let their livestock run free, due to the panic they will feel. They will throw themselves against the barn walls, injuring themselves, or fly into the coop walls until their wings are broken, such is the panic that will engulf them. During the hours going into the Pole Shift, or even the week ahead when Rotation Stoppage has created endless tension in the rock, they will flee in this direction or that until exhausted, but most likely will come home after it is all over. Pets should be treated in the same manner, and if allowed to run will be less likely to attack. Those dogs bred to be fighters or attack dogs the exception.*

---